

**IIM
RANCHI**

बहुमुखविकासो गन्तव्यः



NURTURING FUTURE LEADERSHIP PROGRAM

Under the Aegis of

MALAVIYA MISSION TEACHER TRAINING PROGRAMME

MINISTRY OF EDUCATION, GOVERNMENT OF INDIA

5-Day Residential Capacity-Building Program

BATCH 09: JULY 06-10, 2026



ABOUT THE PROGRAMME

OVERVIEW

The IIM Ranchi's five-day Nurturing Future Leadership Program (NFLP) is a five-day (30-hour) residential leadership development program conducted under the Malaviya Mission Teacher Training Programme (MMTTP) of the Ministry of Education, Government of India. Aligned with National Education Policy (NEP) 2020, the program aims to identify and nurture future institutional leaders among faculty members, cultivating a participative and empowered academic ecosystem. The program is hosted at IIM Ranchi as part of a national initiative involving eminent institutions across the country.

PROGRAMME OBJECTIVES

- Build an ecosystem to inculcate leadership skills in early-career faculty to advance institutional and personal growth.
- Expand the national pool of academic leaders equipped for institutional governance roles.
- Enable proactive faculty contribution to shared governance, problem-solving, and initiative development.
- Empower institutional leadership to assess and support leadership capabilities among the faculty members.

KEY HIGHLIGHTS

WHO SHOULD APPLY

Faculty Type : Permanent/regular nominated by Director or Vice-Chancellor or Head of the institution

Experience : At least 3-years of teaching

Affiliation : Centrally funded or state public or private higher education insitutions (HEIs)

FUNDING & COSTS

- Fully funded by the Ministry of Education
- Includes boarding, lodging, training, materials, and expert facilitation
- Travel to be borne by the institution
- Additional nominees beyond two per institution must be funded by the nominating institution

CERTIFICATE

Exclusive ceriticate from IIM Ranchi



INDICATIVE CONTENT

DAY	SESSION	SESSION TITLE	FOCUS AREA
Day 1 Leadership Foundations	1	Inaugural Session	Program goals, expectations, and community building
	2	Leading with Emotional Intelligence	Self-awareness, empathy, and building trust in teams
	3	Collaborative Governance for Academic Institutions	Engaging internal and external stakeholders
	4	Mindful Leadership and Well-being	Sustaining personal energy and leadership clarity
Day 2 Institutional Strategy, Finance & Operations	5	Vision-Led Institutional Strategy	Building aligned and adaptive strategies in academia
	6	Financial Leadership in HEIs	Strategic budgeting, fund utilisation, and accountability
	7	Cost Optimisation and Resource Diversification in Higher Education	Alternative funding models, revenue innovation, and endowment building
	8	Operational Excellence: Agile Systems in Academic Administration	Capacity planning, cross-functional coordination, and digital process design
Day 3 Research Excellence & Social Impact	9	Building a Research-Led Academic Institution	Creating ecosystems that promote research productivity, mentoring, and research planning
	10	Research Visibility and Global Rankings	Strategies to boost institutional reputation through high-quality publications and outreach
	11	Driving Social Impact through Research	Aligning research with national priorities, SDGs, and community needs
	12	Measuring Impact: From Research to Societal Change	Creating and using impact frameworks (SDGs, NEP goals) to assess and amplify research value



INDICATIVE CONTENT

DAY	SESSION	SESSION TITLE	FOCUS AREA
Day 4 Innovation, Inclusion & Data-Driven Decision- Making	13	Leading Innovation and Institutional Foresight	Fostering incubation, interdisciplinary ideation, and innovation hubs
	14	Digital Transformation in Higher Education	Examining the role of digital technologies in transforming educational delivery
	15	Data-driven Academic Leadership: Dashboards, KPIs and Insights	Using the institutional data systems and key metrics for strategic and transparent governance
	16	Designing Inclusive Innovation Systems in HEIs: A Data-Informed Approach	How can HEIs design innovation ecosystems (incubation, interdisciplinary research, digital labs)
Day 5 Communication, Application & Closure	17	Strategic Communication and Influence for Academic Leaders	Persuasive messaging, storytelling, and media communication
	18	Leadership Showcase: Group Case Presentations	Participants apply key learnings to institutional challenges
	19	Peer Review, Feedback, and Reflective Practice	Constructive feedback and leadership self-reflection
	20	Valedictory: Synthesis and Certificates	Closing ceremony with roadmap for real-world application

PEDAGOGY

CASE METHOD

- Central approach
- Allowing participants to analyze & discuss real world scenarios (leaders' decision-making).

SUPPLEMENTARY ACTIVITIES

- Participatory lectures
- Role-play exercises
- Reflective self-assessment

EMPHASIS ON PRACTICAL IMMERSION

- Simulations & case-based teaching
- Harvard Business Impact partnership
- Enhances faculty competency

ABOUT RANCHI

Ranchi is the capital city of Jharkhand and is endowed with rich biodiversity and diverse landscapes. Popular destinations around Ranchi are Patratu Valley, Dassam, Hundru, and Jonha Falls, Tagore Hill, Getalsud, Kanke and Dhurwa Dams, Deori, Jagannath and Pahari Mandirs.

ABOUT IIM RANCHI

The Indian Institute of Management Ranchi was established under the Government of India in December 2009 and commenced classes in July 2010. It is ranked 18th nationally among management institutions in the National Institutional Ranking Framework 2025 (NIRF 2025). The institute offers a wide variety of academic programmes which includes MBA, MBA-HR, MBA-BA, IPM, PhD, EPhD & Executive Education. Academic strength is supported by 80+ faculty members across 9 academic areas, with 176+ research publications in the 2024-25 year.

The permanent urban green campus at Prabandhan Nagar, Nayasarai, Ranchi, provides a conducive learning environment, complemented by a dedicated executive education centre in Hyderabad. Over the past year, the institute has further expanded its ecosystem through the establishment of key initiatives and centres such as the Finance Lab, Centre of Teaching with AI, Research Methods Group, Virtual Reality Case Repository, and several other academic and innovation-led platforms.

FACILITIES *at* IIM RANCHI

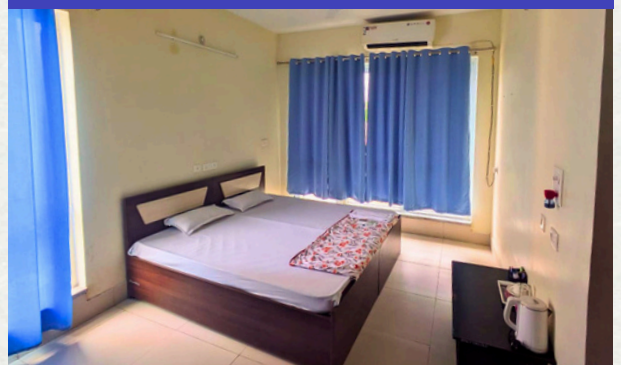
STATE-OF-THE-ART INFRASTRUCTURE



HI-TECH CLASSROOMS



IN-HOUSE EXECUTIVE ACCOMODATION



CAFETERIA & DINING



LEARNING RESOURCE CENTRE



ON-CAMPUS CRECHE FACILITY



CYCLING FACILITY



BOARDROOM ACTIVITY



GYMNASIUM & MORE



PARTICIPANTS' TESTIMONIALS



Bikram Kumar Dutta,
Assistant Professor,
Kejriwal Institute Of Management & Development Studies



The programme offered a perfect blend of academic depth and practical insights. The structured sessions and excellent hospitality made this a rewarding leadership learning experience. It significantly enhanced my perspective on institutional growth and leadership practices.



Vidushi Sharma,
Assistant Professor,
Sarla Birla University



The programme offered valuable insights into mentoring and experiential learning, especially relevant for engaging with students from rural backgrounds. I look forward to a long-term association with IIM Ranchi. The sessions were highly relevant, reflective, and immediately applicable.



Anindya Saha,
Assistant Professor,
iLead Institute of Leadership Entrepreneurship & Development



An inspiring and immersive programme with thought-provoking sessions and participatory learning. The faculty engagement, campus infrastructure, and unique experiences made it truly memorable. It provided clear direction for strengthening academic leadership and institutional effectiveness.



Julie Vardhan,
Assistant Professor,
Amity University Jharkhand



Each session was thoughtfully designed, offering deep insights into classroom practices and institutional leadership. A highly enriching and well-curated programme. The learnings will greatly inform my approach to teaching, mentoring, and administration.



Mosarraff Hossain,
Assistant Professor,
The University of Burdwan



A truly enriching experience that helped me discover and strengthen my leadership abilities. The learning, exposure, and hospitality at IIM Ranchi were exceptional. The programme offered practical perspectives to drive positive change within institutions.

PROGRAMME DIRECTORS



PROF. MANISH BANSAL

Assistant Professor,
Finance & Accounting Area

He is the Chairperson of Doctoral Programme & Research (DPR), as well as the Chairperson of Executive Education & Consulting (EEC).

A Fellow (Ph.D.) of IIM Kashipur, he has qualified for the UGC-JRF three times in different subjects.

An active trainer who has conducted various MDPs for officers from PSUs such as SAIL, Coal India, DVC, CAG, etc., covering areas such as Finance for Non-Finance Executives, Strategic Financial Management, Business Acumen, Forensic Auditing & Leadership Development.



PROF. KUSHAGRA SHARAN

Assistant Professor,
Strategy & Entrepreneurship Area

A PhD from IIM Kozhikode, he is the sole recipient of Australia India Research Fellowship across all IIMs, an awardee of the UGC-SAP fellowship & selected for the Indian Academy of Sciences & JNCASR fellowships.


A published author of multiple books, he delivers guest lectures at IRITM for civil servants & various institutes. Recognized as 'Distinguished Alumni' of BIT Mesra & among the Top-100 Global Education Leaders, he combines rigorous scholarship with consulting experience, advising organizations on strategic transformation.

HOW TO APPLY

Faculty must be nominated by their Director / Vice Chancellor / Head of the Institution via the UGC MMTTP Portal: <https://mmc.ugc.ac.in/home>

For more information: <https://iimranchi.ac.in/nurturing-future-leadership-program/>

CONTACT US

 Mr. Karan Sahu, Executive Education & Consulting (EEC) Office,
IIM Ranchi, Prabandhan Nagar, Nayasarai Road, 835 303, Jharkhand

 +91-70045 58480

 office.eec@iimranchi.ac.in  www.iimranchi.ac.in

